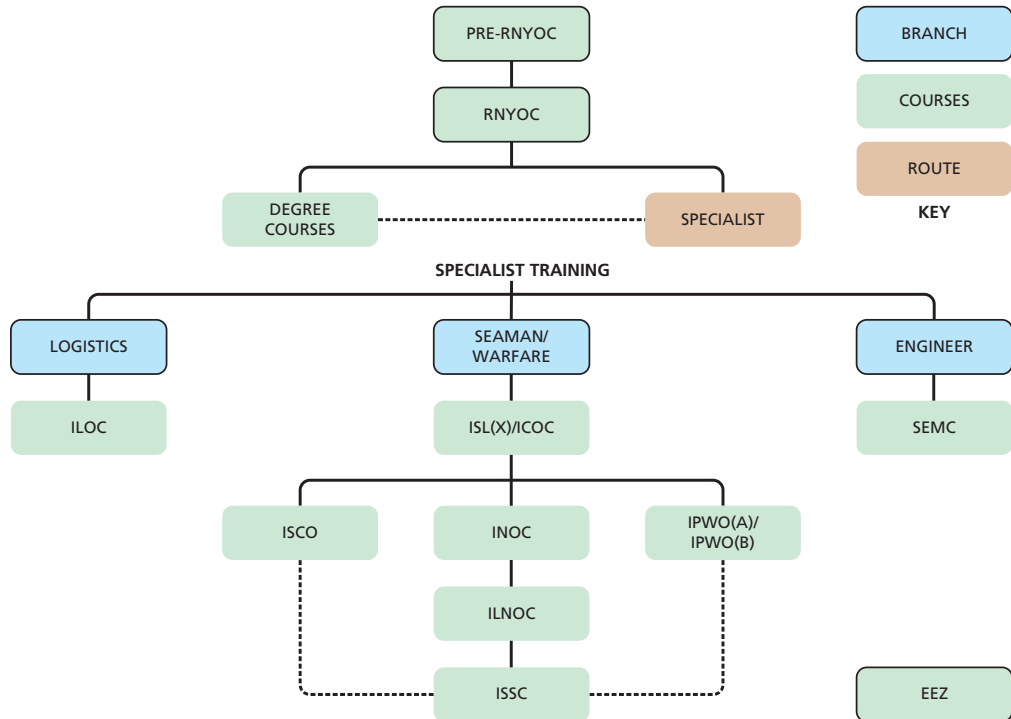


# New Entry Training



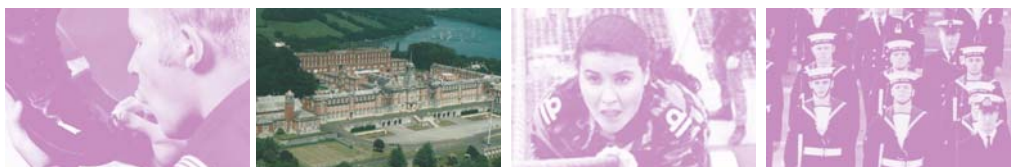
## JUNIOR OFFICERS' CAREER TRAINING



### Notes:

1. Various periods of Sea/Practical experience are required between courses. These are detailed in the specific course data sheets.
2. Officers should take either IPWO(A) or (B) but not both. Other courses post-ISL(X)/ICOC may be taken in any combination dependent upon the customer Navies needs as long as the relevant periods of pre-course experience are met.
3. Abbreviations:

- ELT English Language Training
- RNYOC RN Young Officers' Course
- ILOC International Logistics Officers' Course
- ISL(X) International Sub-Lieutenant (Executive) Course
- ICOC International Coastal Operations Course
- ISSCC International Small Ships Command Course
- IPWO International Principal Warfare Officers' Course (A and B)
- INOC International Navigation Officers' Course
- ISCOC International Signals Communication Officers' Course
- ILNC International Long Navigation Course
- EEZ Exclusive Economic Zone Protection Officers Course
- SEMC Systems Engineering and Management Course



### International Defence Training (Royal Navy)

IDT1A Tel: +44 (0) 23 9254 8153  
 IDT1B Tel: +44 (0) 23 9254 8480

idtroyalnavy@btconnect.com www.mod.uk/idtroyalnavy